

NON-COLLAPSIBLE RUBBER HOSE

For use on continuous flow reels.

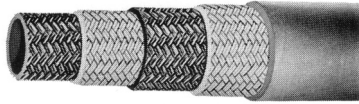


Figure No. 7035-7038

STANDARD EQUIPMENT: Spiral braid wrapped synthetic rubber hose -150lb. working pressure-600lb. burst pressure. Furnished with shank type couplings.

Figure No.	Size
7035	3/4"
7036	1 1/4"
7037	1"
7038	1 1/2"

HOSE SADDLE RACK

For wall mounted hose storage

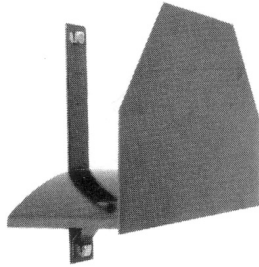


Figure No. 7055

STANDARD EQUIPMENT: Heavy gauge steel construction red enamel finish, 16" overall width, 10" overall height.

Figure No.	Depth	Hose Capacity
7055	3 1/2"	50' -No. 3405-1 1/2 SJRL
7056	4 1/2"	50' -No. 3406-2 1/2 SJRL
7057	6 1/4"	100' -No. 3405-1 1/2 SJRL
7058	9"	100' -No. 3406-2 1/2 SJRL

HOSE HOLDER

For wall column mounted hose storage

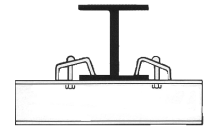
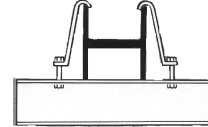


Figure No. 7060

STANDARD EQUIPMENT: Heavy gauge steel construction red enamel finish. Mounting brackets A and B supplied for attachment for either side of 8", 10" or 12" column.

Hose Capacity:

100' No. 3405 - 1 1/2" SJRL
Size: 20"W X 17"H X 4" D



HOSE REELS

For Wall or Pipe mounted hose storage.

STANDARD EQUIPMENT:

All tubular steel with steel rim spokes, red enamel finish, one-piece wall mouting bracket

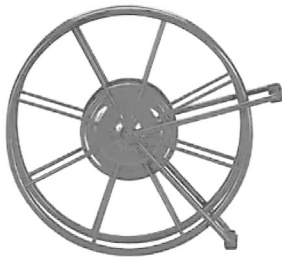


Figure No. 7065-7074

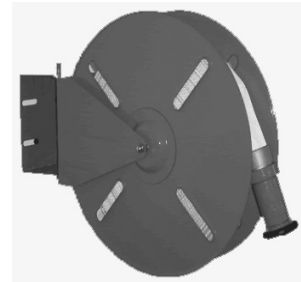
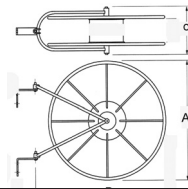


Figure No. 7075-7077

Figure No.	Hose Size	Lt. Wt.	Capacity		Dimensions		
			Single Jacket Rubber Lined	Double Jacket Rubber Lined	A Height	B Width	C Depth
7066	1 1/2"	100	75	50	21"	27"	7 1/2"
7068	1 1/2"	300	200	150	26"	34"	9 1/2"
7071	2 1/2"	150	100	75	26"	33"	7 1/2"
7072	2 1/2"	150	100	75	26"	34"	9 1/2"
7074	2 1/2"		200	150	26"	37 1/2"	13"
7075	1 1/2"	150	50-75		18"	23 1/2"	6 1/4"
7076	1 1/2"	250	100		24"	29"	6 1/4"
7077	2 1/2"	100	100		24"	29"	8 1/4"