

8072 VTD-25 is being designed to test the GPM flow and pressure produced from 2 1/2" pressure reducing valves in standpipe systems.



Figure No. 8072

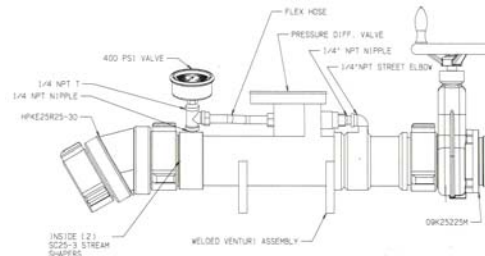


Diagram of Figure No. 8072

NFPA 14 and NFPA 25 requires hose valve testing in standpipe systems. These tests are done when the valves are first installed and periodically afterwards. This is done to insure that the valves are free from defects and meet the systems hydraulic requirements.

- "In Line" testing is provided through a calibrated venturi flowmeter
- New Lighter weight, size and versatility
- Capable of use for downstream hydrant GPM flow testing
- Crank handle for easy opening, closing and throttling water flow
- Replace faulty valves immediately
- Set field adjustable valves accurately on site
- Verify water supplies from fire pump

SPRINKLER LINE TESTER



Figure No. 8080

Brass unit used on the end of branch lines to flush system. 1" NPT Female inlet, 1" NPSH Male Outlet with cap and chain. Accommodates 1/2" sprinkler head. **U/L LISTED.**

PITOT GAUGE



Figure No. 8083

STANDARD EQUIPMENT: Handle grip. Liquid filled gauge 0-160 is standard. Other pressures available upon request. Complete with case and Fire Stream/Friction loss data.