

## HOSE SADDLE RACK

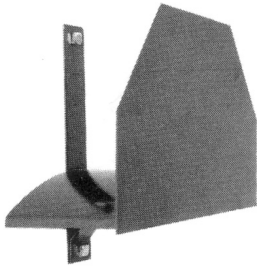


Figure No. 7055

For wall mounted hose storage

**STANDARD EQUIPMENT:** Heavy gauge steel construction red enamel finish, 16" overall width, 10" overall height.

Figure No.	Depth	Hose Capacity
7055	3 1/2"	50' -No. 3405-1 1/2 SJRL
7056	4 1/2"	50' -No. 3406-2 1/2 SJRL
7057	6 1/4"	100' -No. 3405-1 1/2 SJRL
7058	9"	100' -No. 3406-2 1/2 SJRL

## HOSE HOLDER

For column mounted hose storage

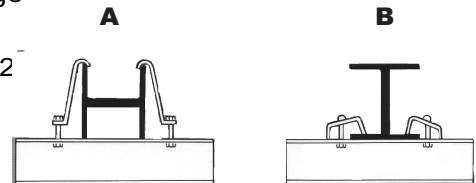


Figure No. 7060

**STANDARD EQUIPMENT:** Heavy gauge steel construction, red enamel finish. Mounting brackets A and B supplied for attachment for either side of 8", 10" or 12" column.

**Hose Capacity:**

100' No. 3405 - 1 1/2" SJRL  
Size: 20"W X 17"H X 4" D



## HOSE REELS

For Wall or Pipe mounted hose storage.



Figure No. 7065

**STANDARD EQUIPMENT:**

All tubular steel with steel rim spokes, red enamel finish, one-piece wall mounting bracket (Except 7069 and 7073).

**OPTIONAL:**

Semi-automatic hose clamp.  
Pipe clamps- SPECIFY SIZE

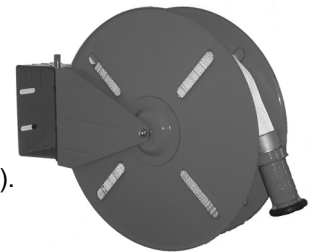
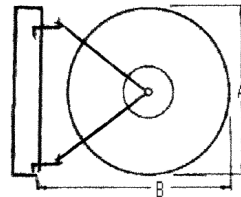


Figure No. 7075-7076

Figure No.	Hose Size	Lt. Wt.	Capacity		(Dimensions Inches)		
			Single Jacket Rubber Lined	Double Jacket Rubber Lined	A	B	C
					Height	Width	Depth
7065	1 1/2"	75			16 1/4	24 1/2	7 1/2
7066	1 1/2"	100			20 5/8	28 1/2	7 1/2
7067	1 1/2"	150	50		26	34 1/2	7 1/2
7068	1 1/2"	250	100	50	26	34 1/2	10
7069	1 1/2"			100	32	43	11 1/2
7070	2 1/2"	100	100		20 5/8	28 1/2	10
7071	2 1/2"	150	150		26	34 1/2	10
7072	2 1/2"	250	250	50	26	34 1/2	13 1/2
7073	2 1/2"			100	32	43	14 1/2
7075	1 1/2"	100	75		18	23 1/2	6 1/4
7076	1 1/2"	200	100		24	29	6 1/4