

THREE-WAY CLAPPER INLET

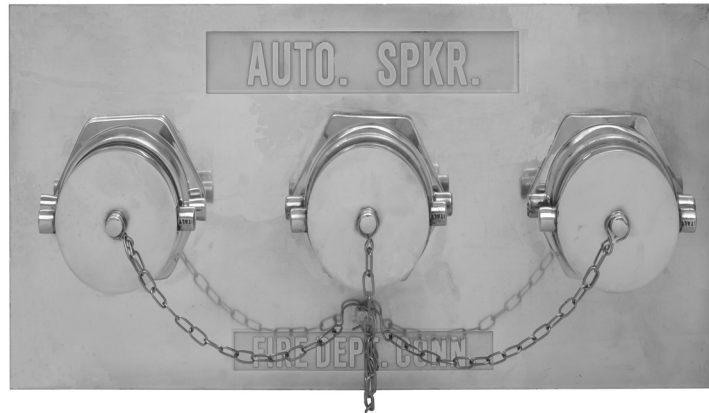


Figure No. 6115-6117

An Auxiliary Inlet Connection with 750 G.P.M. minimum inlet capacity. Used to supplement fire protection water supply. Flush design enhances appearance and provides unobstructed passage.

STANDARD EQUIPMENT: Cast brass, three way body with drop clappers, 6" back outlet or 6" bottom or top connections as selected by figure number, brass plate, adapters and plugs with chains.

SPECIFY THREAD AND BRANDING.

BRANDING: "Standpipe", "Auto Spkr", "Combination Standpipe and Sprinkler Systems", "Dry Standpipe". Special lettering available.

OPTIONAL FINISHES:

- PB - Polished Brass
- PC - Polished Chrome Plated

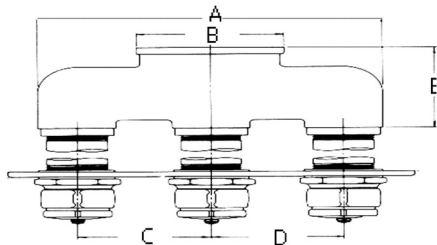


Diagram of 6115 Body

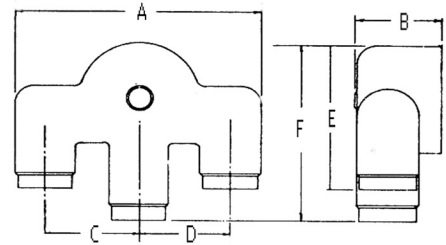


Diagram of 6116/6117 Body

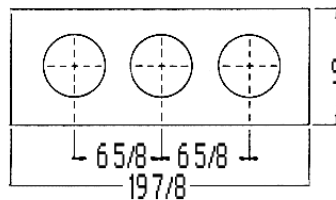


Diagram of plate for 6115-6117 Siamese

OUTLET LOCATIONS			SIZE	DIMENSIONS					
BACK Fig. No.	BOTTOM Fig. No.	TOP Fig. No.		A	B	C	D	E	F
6115			6 X 2 1/2 X 2 1/2 X 2 1/2	17 5/16	7 3/8	6 5/8	6 5/8	6 1/8	
	6116	6117	6 X 2 1/2 X 2 1/2 X 2 1/2	16	7 3/4	6 5/8	6 5/8	10	12 1/2