

2 1/2" X 2 1/2" HOSE RACK ASSEMBLY



3315 - 3325 Series

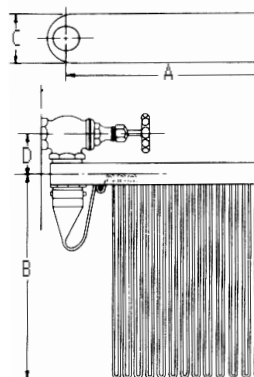
Series 3315 thru 3325 Hose Rack Assemblies provide immediate means of fire control. These units are capable of delivering the nationally recognized standard of 100 GPM at 65 P.S.I. at the nozzle and are rated for Class II and Class III Service under NFPA/FEMA Class of Service.

Conforms with **New York City Occupancy Groups A, B, and D.**

STANDARD EQUIPMENT:

- No. 3402- 2 1/2" Single Jacket Lined Hose
- No. 3442- 2 1/2" Cast Brass Coupling
- No. 3487- 2 1/2" Cast Iron Nozzle
- No. 5045- 2 1/2" Cast Brass Angle Valve U/L
- No. 5735- 2 1/2" Cadmium Plated Escutcheon
- No. 3359- Red Enamel Pin Rack
- No. 3366- 2 1/2" Cast Brass Nipple

Figure No.	Hose Length	Hose Diameter	Hose Type	Valve Size	Dimensions			
					A	B	C	D
Basic Unit As Regularly Furnished (above)								
3315	50'	2 1/2"		2 1/2"	16 1/2	29	6	5
3317	75'	2 1/2"	POLY	2 1/2"	16 1/2	29	6	5
3320	100'	2 1/2"	LINED	2 1/2"	16 1/2	29	6	5
3325	125'	2 1/2"	HOSE	2 1/2"	16 1/2	29	6	5



STYLE "N"

FEMA/NFPA CLASS OF SERVICE

Class 1 - Fire Service Only

Class 2 - Occupant Use

Class 3 - Fire Service or Occupant Use

NOTE

Per New York City Code

No single length of hose to exceed 50 feet.
e.g. 125 feet has 2-50' lengths and 25' length.